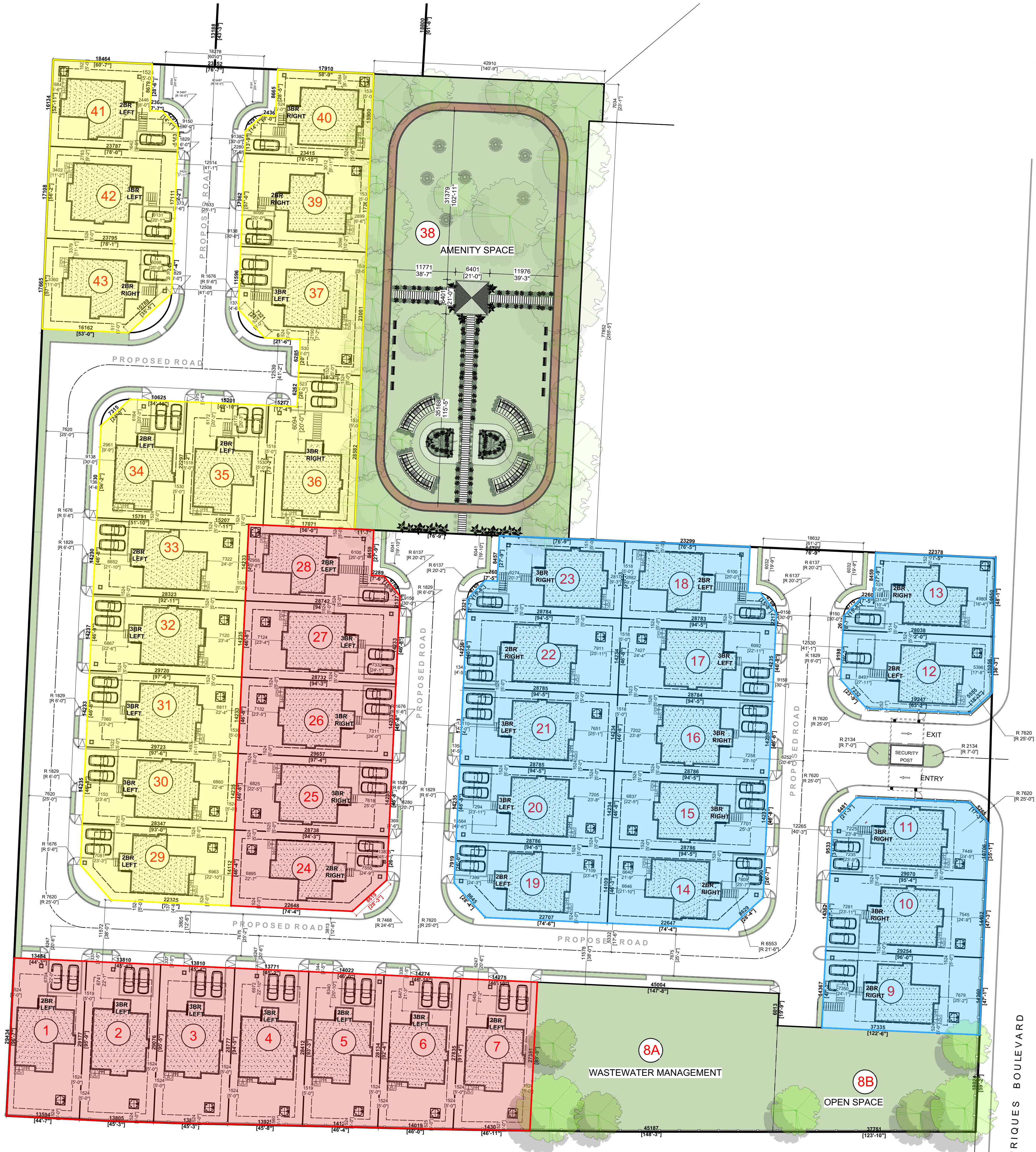


**SCHEDULE OF SIZES & BUILT UP AREAS**

Lot Number	Lot Area (Sqm)	Lot Area (Sqft)	Building Typology	Number of Floors	Area of Building (sq.ft./sq.m)
1	398.77	4292.38	Residential 3 Br	1	1357sq.ft/ 126.03sq.m
2	406.76	4378.36	Residential 3 Br	1	1357sq.ft/ 126.03sq.m
3	403.82	4346.78	Residential 3 Br	1	1357sq.ft/ 126.03sq.m
4	400.39	4309.72	Residential 3 Br	1	1357sq.ft/ 126.03sq.m
5	400.62	4312.33	Residential 3 Br	1	1357sq.ft/ 126.03sq.m
6	399.89	4304.43	Residential 3 Br	1	1357sq.ft/ 126.03sq.m
7	398.5	4289.43	Residential 3 Br	1	1357sq.ft/ 126.03sq.m
8A	1193	12841.36	Sewage Treatment	-	-
8B	691.35	7441.68	Green Space	-	-
9	421.5	4536.99	Residential 3 Br	1	1357sq.ft/ 126.03sq.m
10	419.39	4514.35	Residential 3 Br	1	1357sq.ft/ 126.03sq.m
11	400.81	4314.38	Residential 3 Br	1	1357sq.ft/ 126.03sq.m
12	401.15	4137.95	Residential 3 Br	1	1357sq.ft/ 126.03sq.m
13	357.79	3851.31	Residential 3 Br	1	1357sq.ft/ 126.03sq.m
14	388.11	4177.67	Residential 3 Br	1	1357sq.ft/ 126.03sq.m
15	409.37	4406.47	Residential 3 Br	1	1357sq.ft/ 126.03sq.m
16	409.54	4408.26	Residential 3 Br	1	1357sq.ft/ 126.03sq.m
17	409.69	4409.91	Residential 3 Br	1	1357sq.ft/ 126.03sq.m
18	360.08	3875.92	Residential 3 Br	1	1357sq.ft/ 126.03sq.m
19	386.83	4163.9	Residential 3 Br	1	1357sq.ft/ 126.03sq.m
20	410.09	4414.27	Residential 3 Br	1	1357sq.ft/ 126.03sq.m
21	409.99	4413.15	Residential 3 Br	1	1357sq.ft/ 126.03sq.m
22	409.85	4411.69	Residential 3 Br	1	1357sq.ft/ 126.03sq.m
23	362.32	3900.06	Residential 3 Br	1	1357sq.ft/ 126.03sq.m
24	388.05	4177.04	Residential 3 Br	1	1357sq.ft/ 126.03sq.m
25	409.2	4404.6	Residential 3 Br	1	1357sq.ft/ 126.03sq.m
26	409.13	4403.94	Residential 3 Br	1	1357sq.ft/ 126.03sq.m
27	408.99	4402.41	Residential 3 Br	1	1357sq.ft/ 126.03sq.m
28	359.74	3872.23	Residential 3 Br	1	1357sq.ft/ 126.03sq.m
29	379.93	4089.6	Residential 3 Br	1	1357sq.ft/ 126.03sq.m
30	403.32	4341.31	Residential 3 Br	1	1357sq.ft/ 126.03sq.m
31	403.02	4338.11	Residential 3 Br	1	1357sq.ft/ 126.03sq.m
32	402.85	4336.3	Residential 3 Br	1	1357sq.ft/ 126.03sq.m
33	402.61	4333.67	Residential 3 Br	1	1357sq.ft/ 126.03sq.m
34	338.62	3644.92	Residential 3 Br	1	1357sq.ft/ 126.03sq.m
35	339.05	3649.58	Residential 3 Br	1	1357sq.ft/ 126.03sq.m
36	452.74	4873.35	Residential 3 Br	1	1357sq.ft/ 126.03sq.m
37	451.42	4859.05	Residential 3 Br	1	1357sq.ft/ 126.03sq.m
38	3423.82	36853.72	Green Space	-	-
39	406.45	4375.01	Residential 3 Br	1	1357sq.ft/ 126.03sq.m
40	332.38	3470.15	Residential 3 Br	1	1357sq.ft/ 126.03sq.m
41	332.82	3582.5	Residential 3 Br	1	1357sq.ft/ 126.03sq.m
42	406.99	4380.9	Residential 3 Br	1	1357sq.ft/ 126.03sq.m
43	372.76	4012.37	Residential 3 Br	-	1357sq.ft/ 126.03sq.m



LEGEND	
<span style="color: blue;">■</span>	-CONSTRUCTION PHASE #1.
<span style="color: red;">■</span>	-CONSTRUCTION PHASE #2.
<span style="color: yellow;">■</span>	-CONSTRUCTION PHASE #3.
LEFT/RIGHT	PATIO COLUMN LOCATION(FRONT ELEVATION).
3BR	-3 BEDROOM UNIT.
2BR	-2 BEDROOM UNIT.

**1 PROPOSED SITE PLAN (PHASE AND UNIT TYPE)**  
Scale: 1:400

**FOR CONSTRUCTION**

- NOTES**
1. Contractor shall check all existing dimensions before work commences
  2. All discrepancies should be pointed out to the architect for clarification.
  3. The building footprint must be set-out by a commissioned land surveyor.

**KEY**

No.	Date	Description
1	30/09/25	Proposed Site Plan Revised
2	06/10/25	Proposed Unit Type Location Updated
3	16/10/25	Proposed units (14) & (43) mirrored.
4	23/03/26	Schedule of sizes and built up areas revised.

**REVISIONS:**

No.	Date	Description
1	30/09/25	Proposed Site Plan Revised
2	06/10/25	Proposed Unit Type Location Updated
3	16/10/25	Proposed units (14) & (43) mirrored.
4	23/03/26	Schedule of sizes and built up areas revised.

**PALM RIDGE VILLAS**  
SPANISH TOWN, JAMAICA

Consultant:

**GW ARCHITECTS LTD.**

Unit 5, 9-11 Phoenix Avenue, Kingston 10  
Email: gwarchitects@gmail.com  
Tel: 1876-620-2853-4

Project ID:  
Drawn By: TBRGRD  
Checked By:  
Issue Date:  
Drawing Scale: 1:400  
Sheet Title:

**PROPOSED SITE PLAN (PHASE AND UNIT TYPE)**

Drawing No: **G-103** Revision No: **R4**